

MDT3300 Touchscreen Calibration Guide

Document version 1.0, July 2017

This document contains instructions on how to perform touchscreen calibration of the MDT3300.

Note: A stylus is required for this procedure.

1. Power up the MDT3300.
2. Once the MDT3300 has completed the boot process, you will see the home screen (default unlocked desktop). Tap the apps icon at the top right.



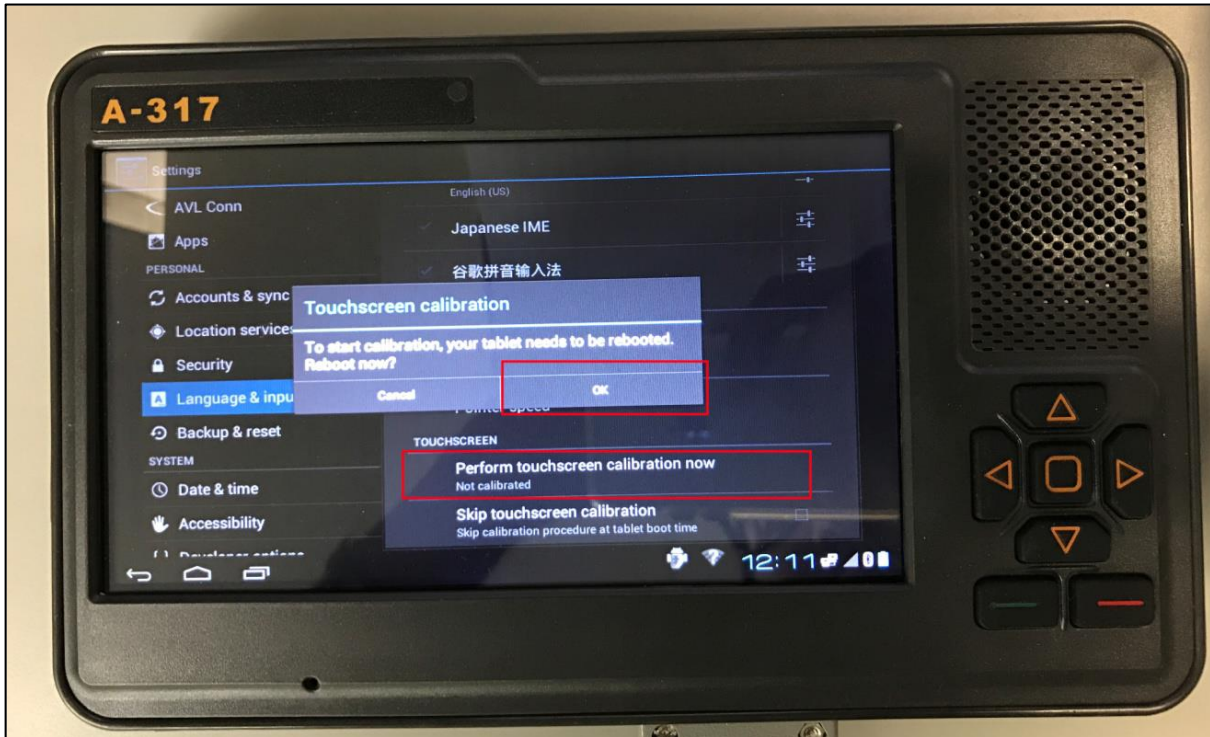
3. On the apps screen, tap **Settings**.



4. In the list of settings on the left, scroll down and then tap **Language & inputs**. Then, in the list of **Language & input** settings on the right, scroll down to the **Touchscreen** header. Here, you can see if the device is **Not calibrated**.



5. If the MDT3300 is not calibrated, tap **Perform touchscreen calibration now**. A confirmation dialog appears indicating that a reboot is required to calibrate – tap **OK**.



6. Once the MDT3300 restarts, follow the on-screen calibration instructions. *Use a stylus to get the most accurate results*. Once the calibration steps are complete, the MDT returns to the home screen and is ready to use BSM applications.